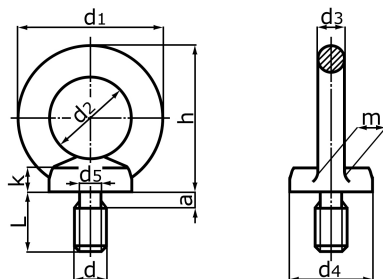


**Śruby z uchem**  
**Eye bolts**

**DIN 580**

**PN-M 82472**



**Wymiary wg PN-M 82472 / DIN 580**  
**Dimensions according to PN-M 82472 / DIN 580**

d	M8	M10	M12	M16	M20	M24	M30	M36
	-	-	-	-	M20x2	M24x2	M30x2	M36x3
d <sub>1</sub>	36	45	54	63	72	90	108	126
d <sub>2</sub>	20	25	30	35	40	50	60	70
d <sub>3</sub>	8	10	12	14	16	20	24	28
d <sub>4</sub>	20	25	30	35	40	50	65	75
d <sub>5</sub>	6	7,7	9,4	13	16,4	19,6	25	30,3
m	10	12	14	16	19	24	28	32
h	36	45	53	62	71	90	109	128
k	6	8	10	12	14	18	22	26
a max	2,5	3	3,5	4	5	6	7	8

d	M42	M48	M56	M64	M72x6	M80x6	M100x6
	M42x3	M48x3	M56x4	M64x4	M72x4 <sup>P</sup>	M80x4 <sup>P</sup>	M100x4 <sup>P</sup>
d <sub>1</sub>	144	166	184	206	260	296	330
d <sub>2</sub>	80	90	100	110	140	160	180
d <sub>3</sub>	32	38	42	48	60	68	75
d <sub>4</sub>	85	100	110	120	150	170	190
d <sub>5</sub>	35,6	41	48,3	55,7	63,7	71,7	91,7
m	38	46	50	58	72	80	88
h	147	168	187	208	260	298	330
k	30	35	38	42	50	55	60
a max	9	10	11	12	12	12	12

<sup>P</sup> – wg PN-M, according to PN-M

**Orientacyjna masa 1000 sztuk śrub według PN-M 82472 w kg \***  
**Average weight 1000 pieces bolts according to PN-M 82472 in kg \***

M8	M10	M12	M16	M20	M24	M30	M36	M42	M48	M56	M64
60	110	180	280	450	740	1660	2650	4030	6380	8800	12400

M72x6	M80x6	M100x6
23300	34200	49100

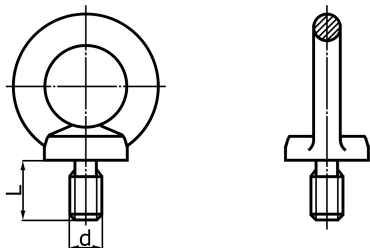
Ze względu na wykonanie śrub w różnych tolerancjach masa śrub podana w tabeli może się wahać w granicach ± 5%.

Due to the different tolerances, the weight of bolts presented in the table may vary by ± 5%.

\* - dla śrub ze stali węglowej - **niedotyczy śrub ze stali nierdzewnej, kwasoodpornej i mosiądzu**

\* - carbon steel bolts – **does not concern inox steel and brass bolts**

**Śruby z uchem**  
**Eye bolts**



**DIN 580**

**PN-M 82472**

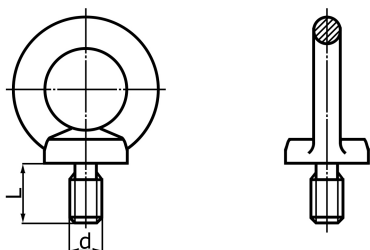
Stal  
 Steel

- - czarne / black
- - cynkowane / electrolytic zinc

**Oferta**  
**Offer**

M8	M10	M12	M16	M20	M24	M30	M36	M42	M48	M56	M64
■ □	■ □	■ □	■ □	■ □	■ □	■ □	■ □	■	■	■	■

**Śruby z uchem**  
**Eye bolts**



**DIN 580**

**PN-M 82472**

Stal nierdzewna i kwasoodporna: **A2 i A4**  
 Stainless steel: **A2, A4**

- ◇ - nierdzewne A2 / Stainless steel A2
- ◆ - kwasoodporne A4 / Stainless steel A4

**Oferta**  
**Offer**

M6	M8	M10	M12	M16	M20	M24	M30
◇ ◆	◇ ◆	◇ ◆	◇ ◆	◇ ◆	◇ ◆	◇ ◆	◇